

MICROZONAZIONE SISMICA

Carta delle Microzone Omogenee in Prospettiva Sismica

SCALA 1:5.000

REGIONE ABRUZZO
 Comune di Caramanico Terme (PE)
 Frazioni



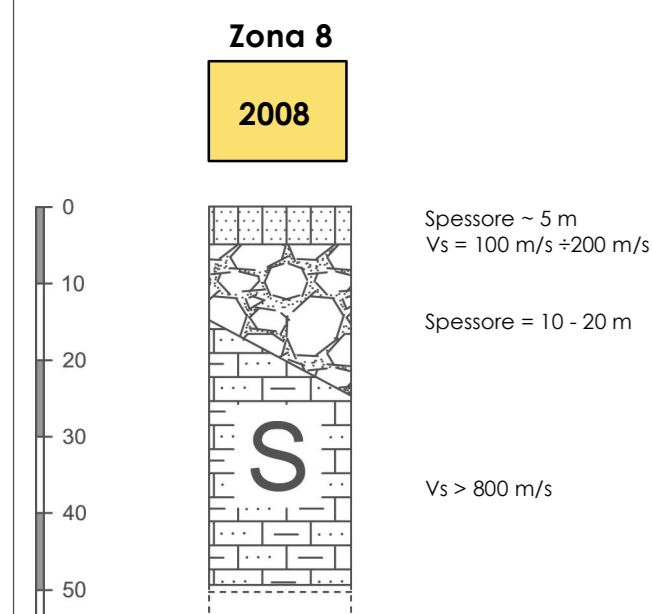
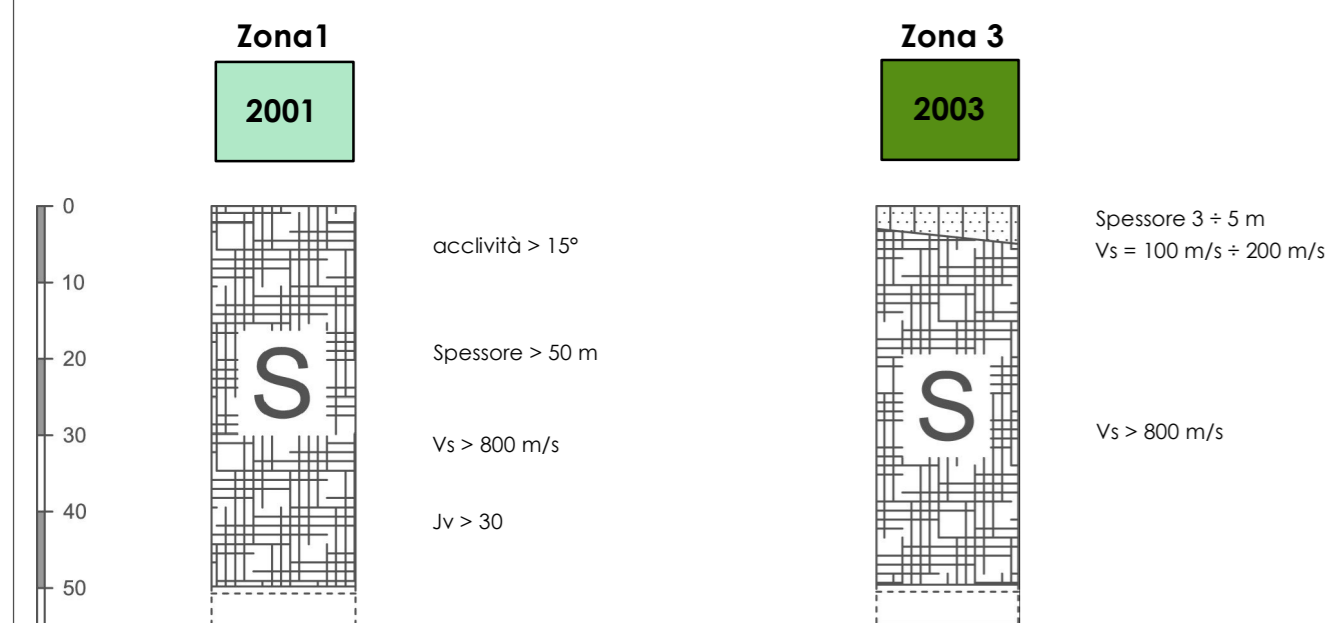
Validazione del Tavolo Tecnico MZS

Tecnico incaricato: Dott. Geol. Cavallucci Silvio
 Collaboratore: Dott. Geol. Cichella Stefano

Data

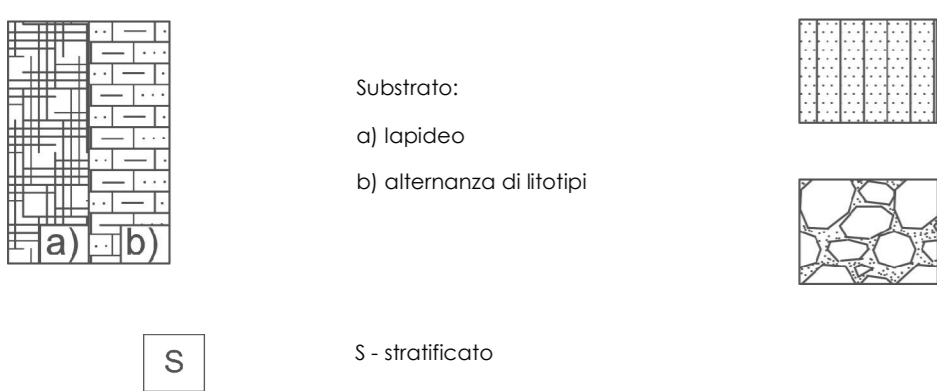
Legenda

ZONE STABILI SUSCETTIBILI DI AMPLIFICAZIONI LOCALI

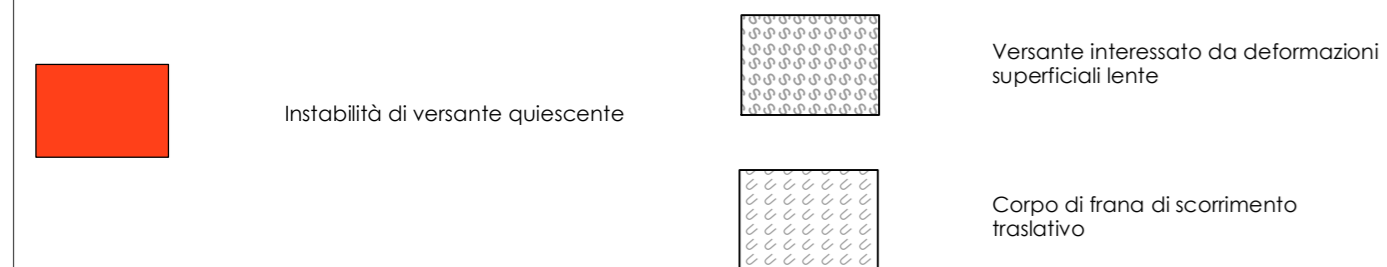


Informazione sul substrato

Legenda dei simboli dei terreni di copertura

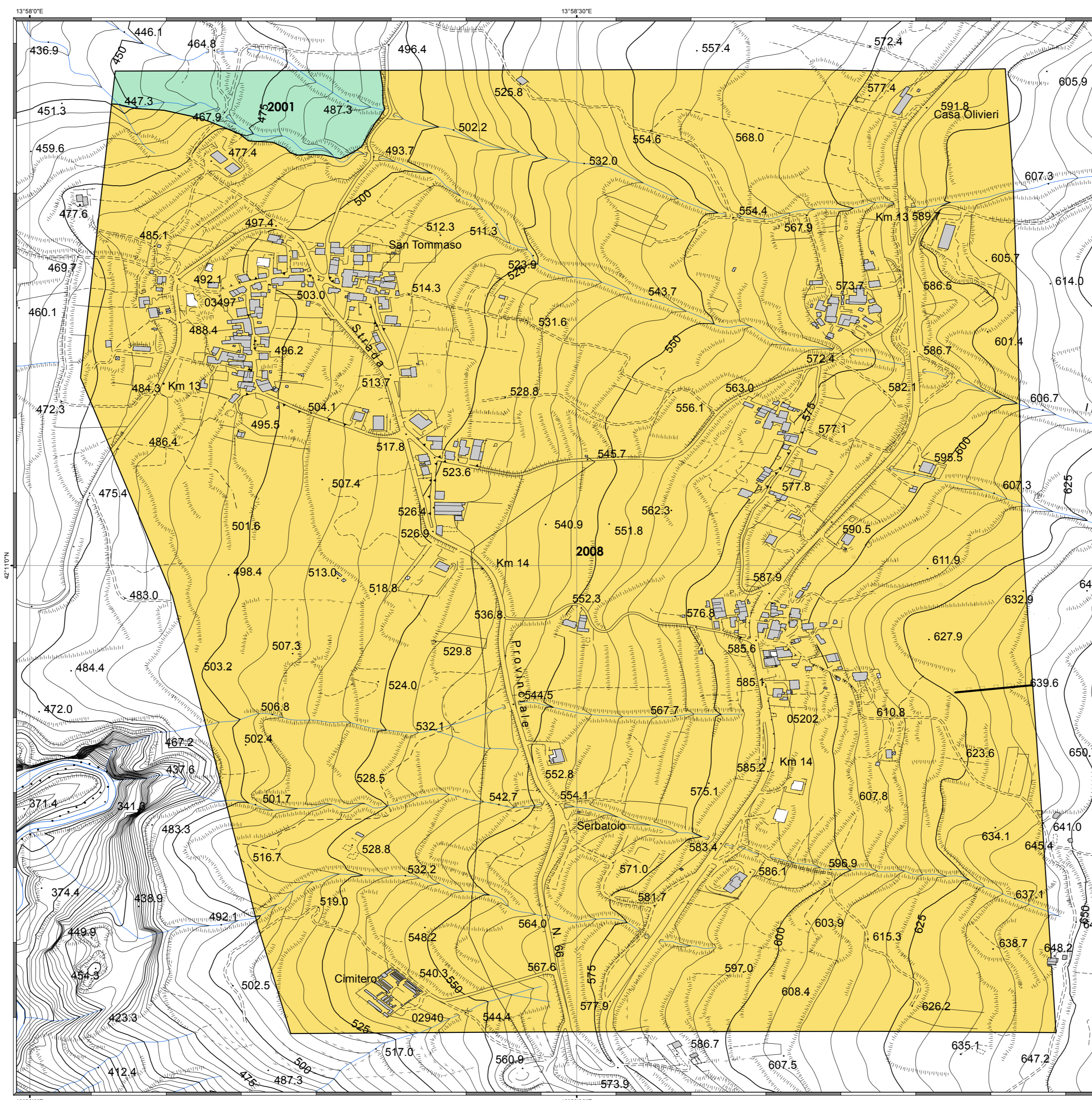
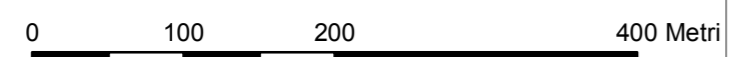
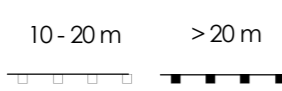


ZONE SUSCETTIBILI DI INSTABILITA'

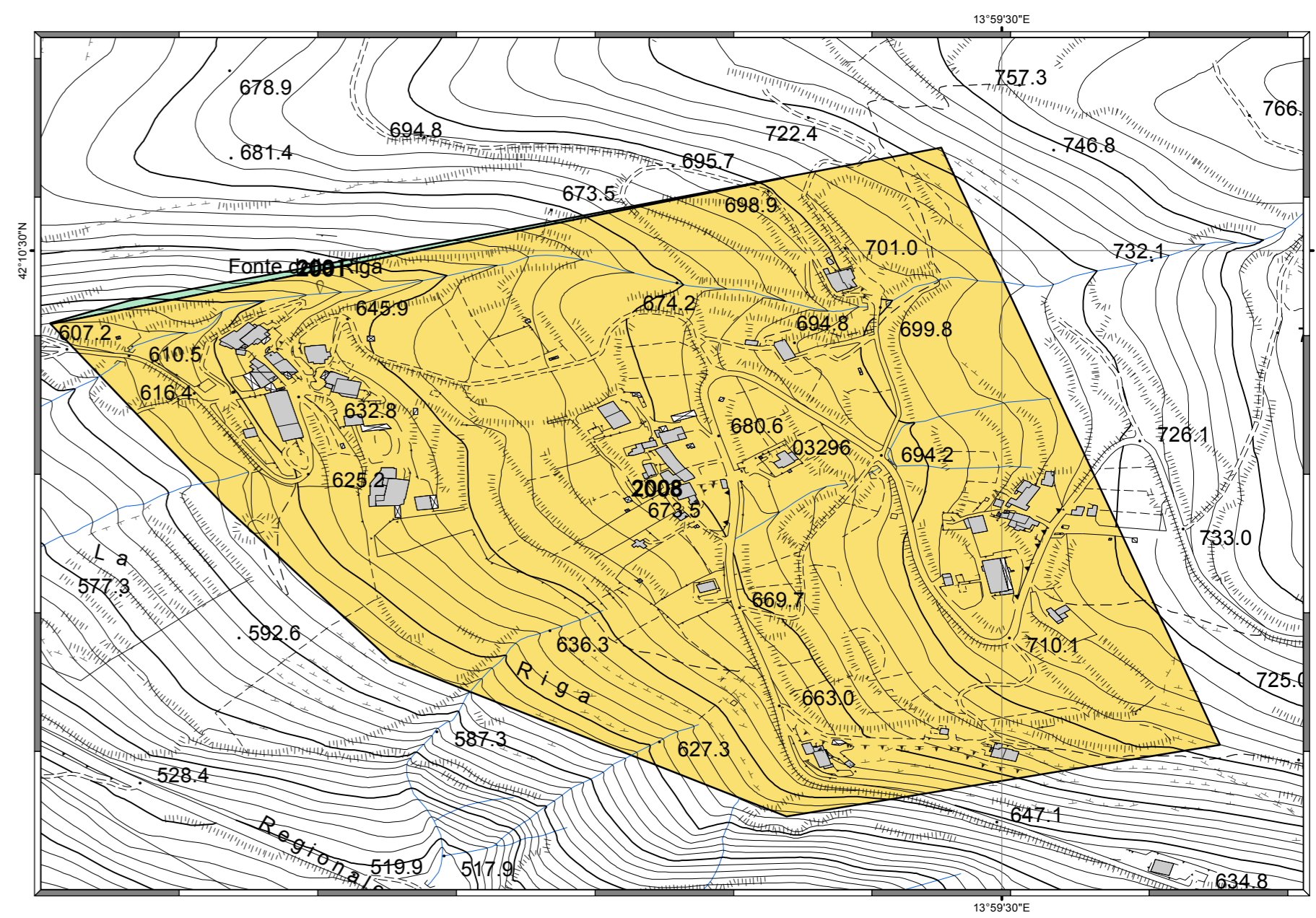


Forme di superficie e sepolti

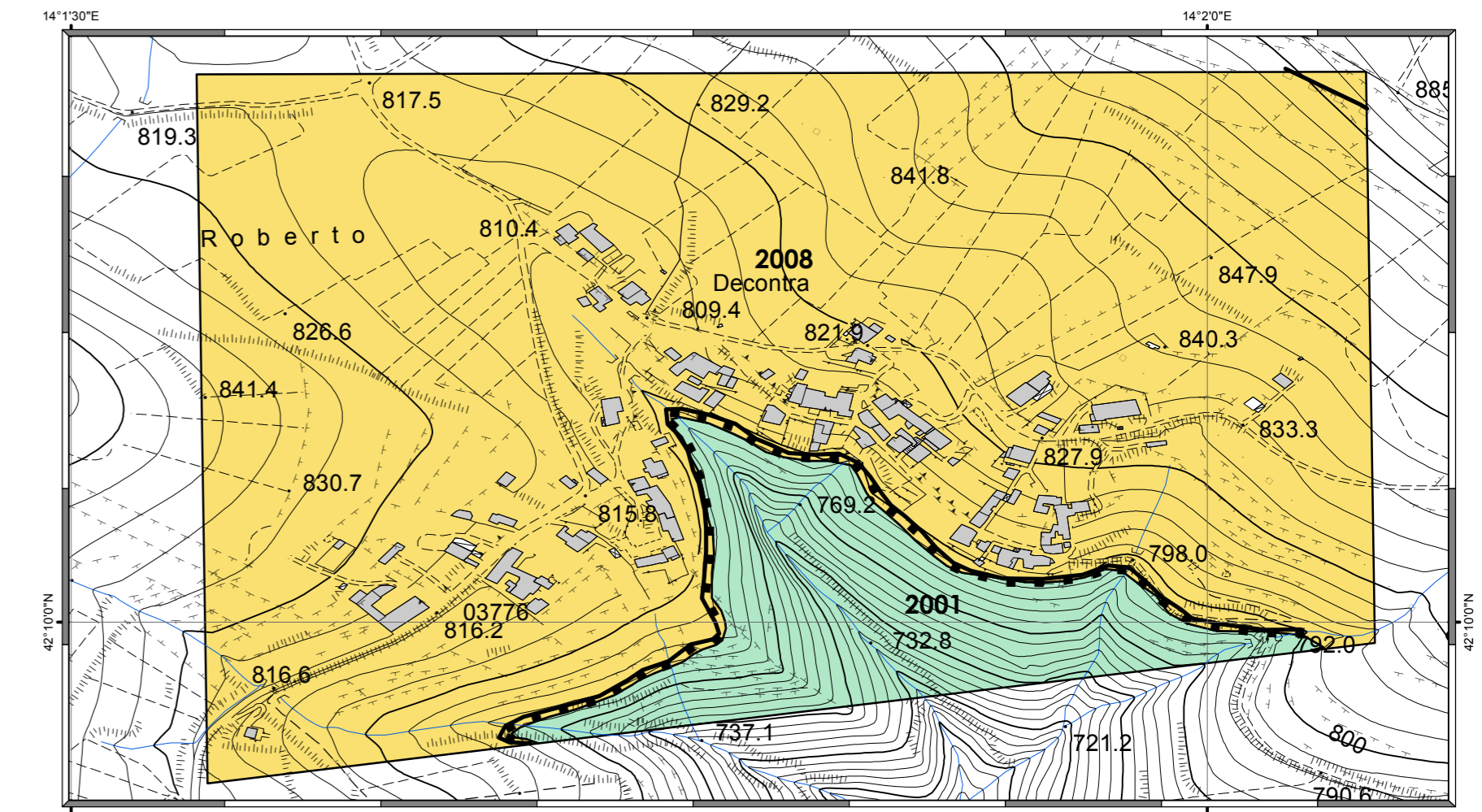
Orto di scarpatura morfologica (naturale o antropica)



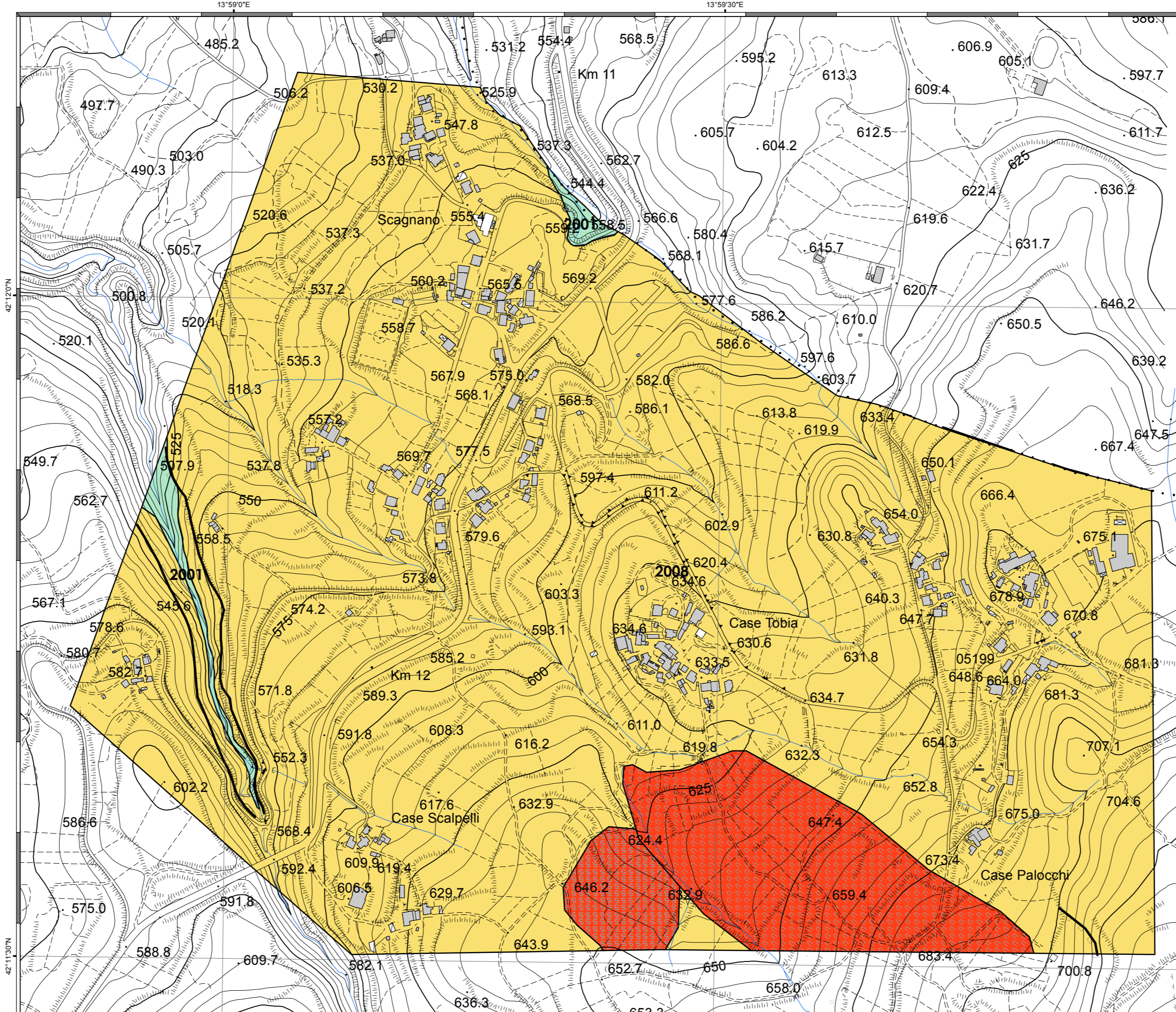
S. TOMMASO



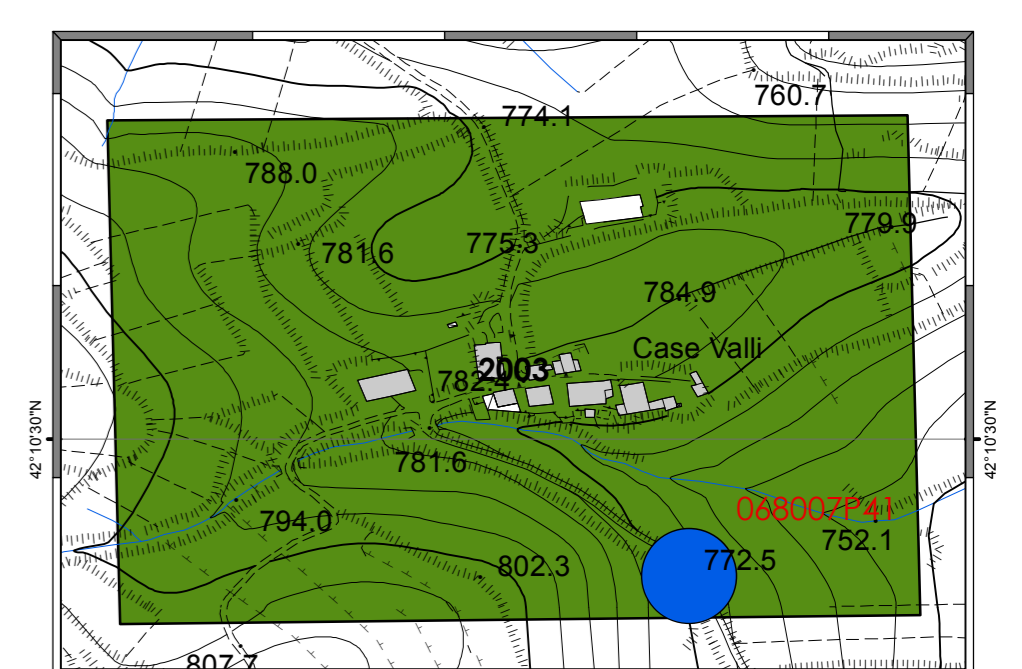
RIGA



DECONTRA



SCAGNANO - S. ELIA



VALLI

LEGENDA DELLE FREQUENZE DI RISONANZA

Frequenza fondamentale F_0 (Hz)

Ampiezza del picco H/V (A_0)



15.0 - 20.0



5.0 - 10.0

0680007P41 Sigla indagine

Rapporto spettrale H/V

